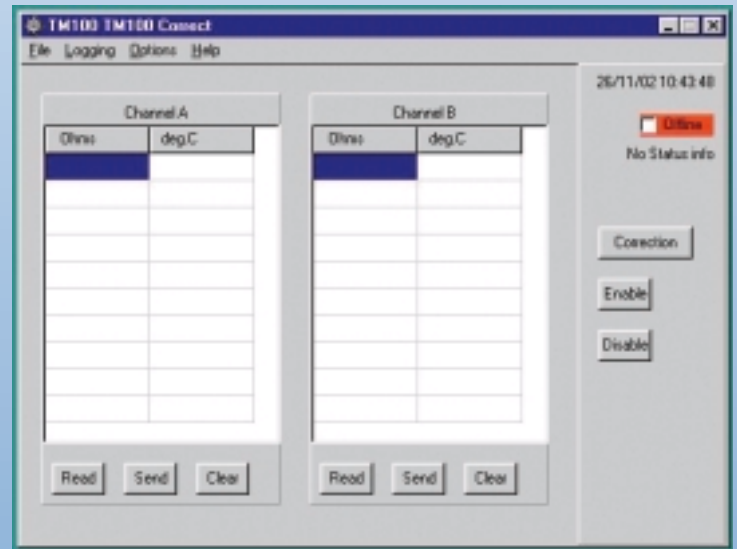


NEW PC WINDOWS SOFTWARE V1.0W FOR TEMPMASTER-100 HIGH ACCURACY DIGITAL THERMOMETER

The Tempmaster-100 is a high precision Pt100 portable thermometer for metrology and other exacting laboratory applications. As a proven instrument, the Tempmaster-100 is used world-wide as a laboratory and site standard in pharmaceutical, medical, food, environmental testing, R&D, and general industrial applications. It is ideal as the reference standard for temperature calibration baths. Display resolution is 0.01°C and a system accuracy of 0.05°C can be achieved.

The PC software for Windows provided offers:

- **User-friendly operation**
- **Remote control & measure**
- **Programming &/or editing of calibration correction values of Pt100 sensors**
- **Read correction values in instrument memory**
- **Load/Save/Print correction values**
- **Optionally log readings to file with date/time/user name/Probe ref. number/Channel A/Channel B**
- **Includes Help file**



Remote control and measure facilities for the enhanced Labfacility Tempmaster-100 high precision thermometer are provided by the new, user-friendly "Windows" software.

The software allows the programming or editing of up to 10 calibration values of two individual Pt100 sensors into the host instrument to optimise measurement accuracy. Sets of calibration values for any number of individual sensors can be stored on disk and loaded as required. Stored calibration values in the instrument can be read and, if required printed out using the software.

A "log to file" facility permits the logging of measured data to disk as required; the date, time, user name and probe reference number are recorded along with the relevant input channel. Remote control also enables real-time temperature readings from the instrument, sending data to, and clearing data from the instrument.



USER INTERFACE

Main window

The main window consists of 3 panels; one for Channel A, one for Channel B and the third one for status / control.

Channel A

Channel A panel shows the correction table for Channel A. The table allows new values to be entered and old values to be edited. There are command buttons to enable the reading from the TM100, sending to the TM100 and clearing of the table.

Channel B

Channel B panel shows the correction table for Channel B. The table allows new values to be entered and old values to be edited. There are command buttons to enable the reading from the TM100, sending to the TM100 and clearing of the table.

Status / Control

This panel shows the status of the TM100 if connected. It also allows the selection of the correction mode and enables or disables the correction mode selected.

File menu

There are sub-menus for the loading, saving and printing of correction table. An exit command is also included.

Load

Load correction table from disk.

Save

Save an existing correction table to disk.

Save as

Save new correction table to disk.

Print

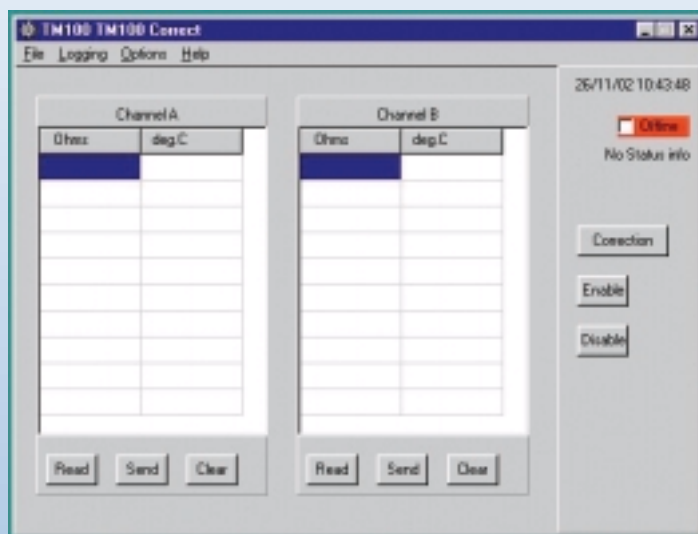
Print correction table on a printer.

Exit

Exit the program.

Logging menu

This menu controls the settings for the logging of measured data to disk. It also starts and stops the logging process.



Setting

Setting of the various options for the logging of measured data to disk.

Start

Start logging.

Stop

Stop logging.

Options menu

The option menu enables the selection of communication ports used to connect to the TM100. There is also a sub-menu to set the various user preferences of the program.

COM

Select the serial communication port used for connecting the TM100. The program will support com1 to com4.

Preferences

Confirmation settings for critical operations such as Read, Send and Clear of channel data.

Settings for auto-save mode of correction data.

Help menu

Provide online help and information about the program.

LABFACILITY

TEMPERATURE & PROCESS TECHNOLOGY



LABFACILITY LIMITED

HEADQUARTERS: 8 Feltham Business Complex, Browells Lane, Feltham, Middlesex TW13 7LW
Tel: +44 (0)20 8818 1888 Fax: +44 (0)20 8818 1897 Email: headoffice@labfacility.co.uk

NORTHERN UK DIVISION: Units 7/8 Abbey Way, North Anston Trading Estate, Dinington, Sheffield S25 4JL
Tel: +44 (0)1909 569446 Fax: +44 (0)1909 550632 Email: northern@labfacility.co.uk

SOUTHERN UK & EXPORT DIVISION: Unit 7, Block K, Southern Cross Industrial Estate, Shripney Road, Bognor Regis, W Sussex PO22 9SD
Tel: +44 (0)1243 871280 Fax: +44 (0)1243 871281 Email: southern@labfacility.co.uk exports@labfacility.co.uk



Certificate No. 4746